



NTSC U/C

MAGIC CARPET

PlayStation™



KIDS TO ADULTS
KA
AGES 6+
SLUS-00029



WARNING: READ BEFORE USING YOUR PLAYSTATION GAME CONSOLE.

A very small percentage of individuals may experience epileptic seizures when exposed to certain light patterns or flashing lights. Exposure to certain patterns or backgrounds on a television screen or while playing video games, including games played on the PlayStation game console, may induce an epileptic seizure in these individuals. Certain conditions may induce previously undetected epileptic symptoms even in persons who have no history of prior seizures or epilepsy. If you, or anyone in your family, has an epileptic condition, consult your physician prior to playing. If you experience any of the following symptoms while playing a video game—dizziness, altered vision, eye or muscle twitches, loss of awareness, disorientation, any involuntary movement, or convulsions—IMMEDIATELY discontinue use and consult your physician before resuming play.

WARNING TO OWNERS OF PROJECTION TELEVISIONS:

Still pictures or images may cause permanent picture-tube damage or mark the phosphor of the CRT, avoid repeated or extended use of video games on large-screen projection televisions. Refer to your projection TV instruction manual for more details.

HANDLING YOUR PLAYSTATION DISC

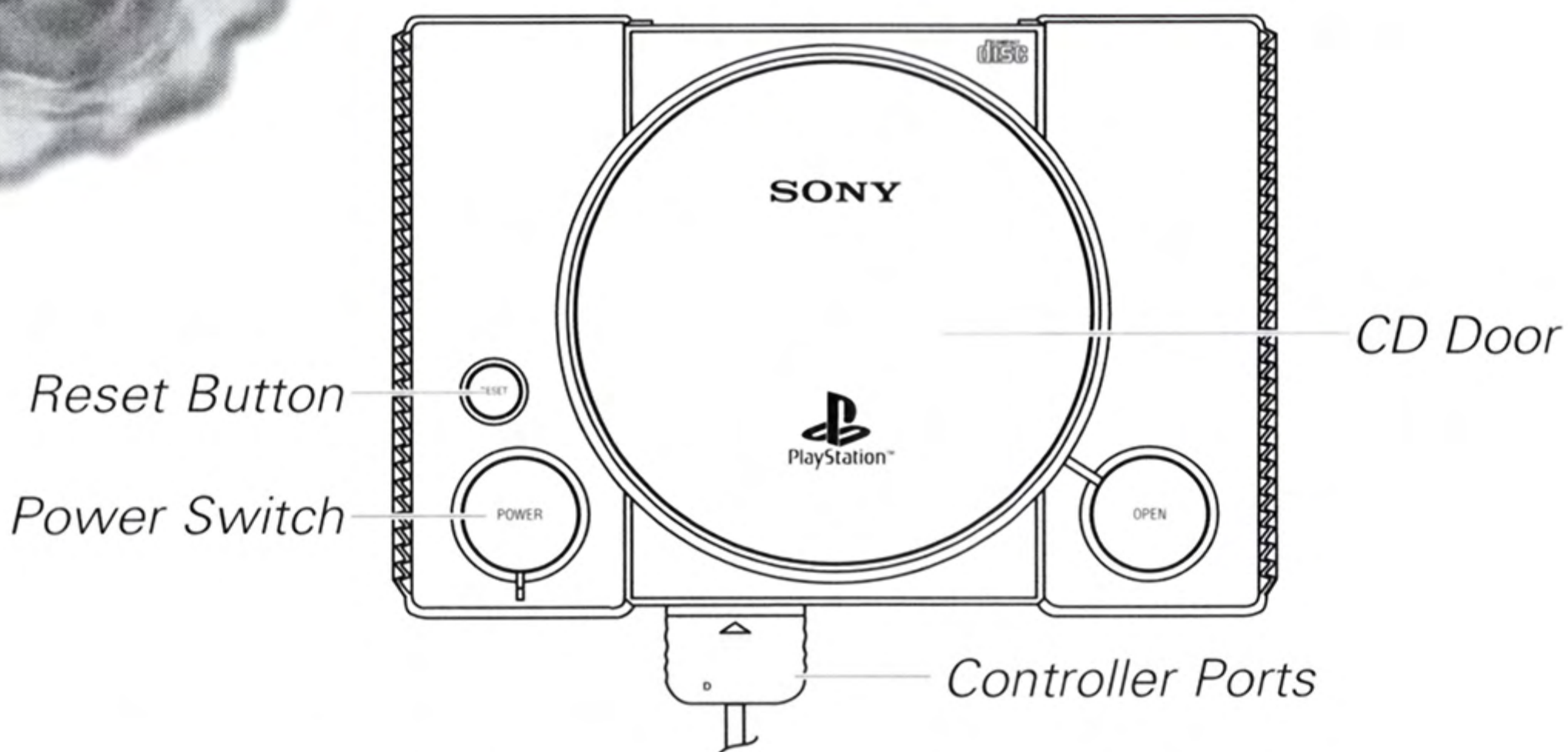
- * This compact disc is intended for use only with the PlayStation game console.
- * Do not bend it, crush it, or submerge it in liquids.
- * Do not leave it in direct sunlight or near a radiator or other source of heat.
- * Be sure to take an occasional rest break during extended play.
- * Keep this compact disc clean. Always hold the disc by the edges and keep it in its protective case when not in use. Clean the disc with a lint-free, soft, dry cloth, wiping in straight lines from center to outer edge. Never use solvents or abrasive cleaners.

This product has been rated by the Entertainment Software Rating Board. For information about the ESRB rating, or to comment about the appropriateness of the rating, please contact the ESRB at 1-800-771-3772.

CONTENTS

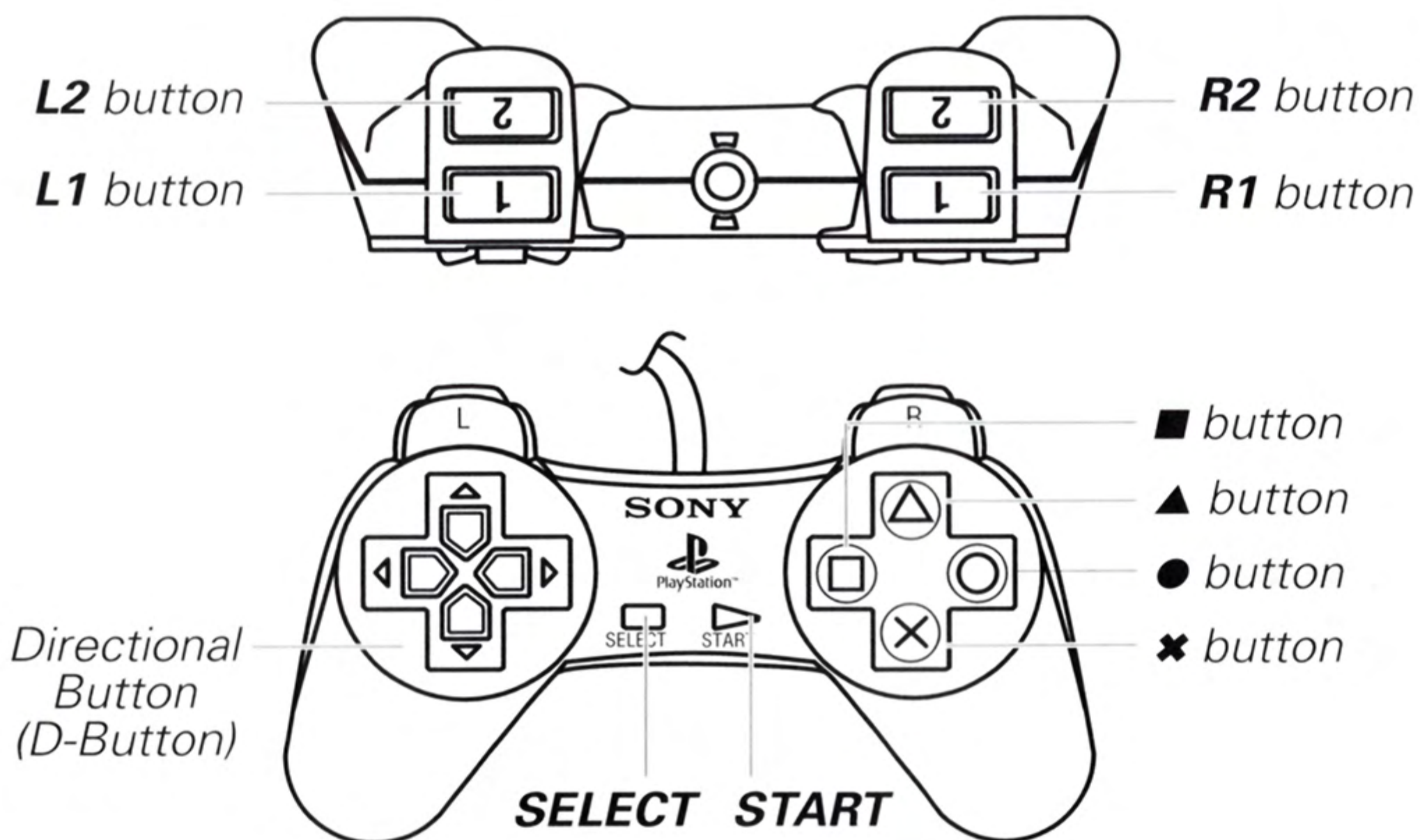
| | |
|---------------------------------------------|----|
| STARTING THE GAME | 2 |
| MAGIC CARPET CONTROL SUMMARY | 2 |
| THE HISTORY OF THE WIZARD WAR | 4 |
| Restoring Equilibrium | 5 |
| Playing Magic Carpet | 5 |
| THE MAIN MENU | 5 |
| THE GAME SCREEN | 7 |
| The All-Seeing Eye | 8 |
| The Stones of Knowledge | 9 |
| Controlling the Carpet | 10 |
| Collecting Mana | 11 |
| Civilians | 11 |
| Wasted Wizards | 12 |
| Completing the Level | 13 |
| THE SPELLS MENU | 14 |
| Spell Mana | 17 |
| Assigning Spells | 17 |
| Casting a Spell | 18 |
| The Map Screen | 19 |
| APPENDIX I: THE MAGIC CARPET BESTIARY | 19 |
| APPENDIX II: A WORD ON EACH WORLD | 22 |
| ABOUT BULLFROG | 26 |
| CREDITS | 27 |

STARTING THE GAME



1. Set up your PlayStation game console according to the instructions in its Instruction Manual. **Make sure the power is OFF** before inserting or removing a compact disc.
2. Insert the *Magic Carpet™* disc, and close the CD door.
3. Insert game controllers and turn on the PlayStation game console.
4. Follow on-screen instructions to start a game.

MAGIC CARPET CONTROL SUMMARY



IN THE GAME

| ACTION | COMMAND |
|-----------------------------|-----------------------------------------------------|
| Dive | D-Button ↑ |
| Climb | D-Button ↓ |
| Bank left/right | D-Button ←→ |
| Cast Left spell | Press ■ |
| Cast Right spell | Press ● |
| Accelerate Forward/Backward | Press ▲/✕ |
| Stop dead | Double press button opposite to direction of travel |
| Toggle Spell menu | Press L1 |
| Strafe left/right | Press L2 / R2 |
| Lower castle | Press L1 + R1 |
| Pause | Press START |
| View Map screen | Press SELECT |

IN SPELL MENU MODE

| ACTION | COMMAND |
|--------------------------------------------|------------------|
| Move cursor around spells | D-Button ↑/↓/←/→ |
| Assign Left spell | Press ■ |
| Assign Right spell | Press ● |
| Close Spell menu without assigning a spell | Press L1 |

THE HISTORY OF THE WIZARD WAR



Within the covers of this leather-bound volume, its ancient pages coated by dust and time, is contained the History of the Wizard War. It was the great historian Molenubar the Chronicler who collected these many fragments of myth and legend, preserving them for posterity in one weighty tome. His was the labor of a lifetime. Writing in the ink of squids on pages of dried papyrus, Molenubar worked day and night to complete the task. But the Old Gods were jealous of the immortality that the completed work would grant him, and took Molenubar before the story could be finished.

And so for the last 5,000 years the History of the Wizard War has remained incomplete. This much at least of the history is known:

When the Old Gods created the world, they invested all living things with a powerful energy force – mana. In time, man learned of the existence of mana and those skilled enough to harness its incredible energy became powerful wizards. It was an age of magic. Sorcerers amazed the populace with their feats and toiled to unearth more of the precious mana. But healthy competition soon turned to bitter rivalry, and the most powerful of these sorcerers learned black arts so that they might overcome their adversaries. Then, in a mighty cataclysm, the world was shattered by one wizard's misguided hand...

However, of the apprentice wizard who was charged with restoring the world to equilibrium Molenubar tells us nothing. All that is known of him is that his mastery of the Magic Carpet was unsurpassed. It now falls to you to complete the chronicle, gather the power of the wizards to yourself and take a Magic Carpet ride to glory.

Restoring Equilibrium

Your quest is to restore equilibrium to the shattered worlds. You do this by possessing mana, whether it be found floating free, contained within some dreadful demonic beast, or in the possession of an evil rival sorcerer. Once possessed, the mana is gathered by hot air balloon and transported to your home castle.

This quest is fraught with danger. The skies are alive with evil. Birds and beasts under the spell of the black arts assail you from all sides. Your castle is a target for all those who would take your mana for their own nefarious ends. Lose the power held there and it won't be long before you perish in the deep, blue waters that encompass each world. Fortunately, there are spells concealed throughout your quest that will assist you. It is vital that you gather these and use them wisely.

Be wary, fly well and cast evil forever from the world.

Playing Magic Carpet

After the Bullfrog logo screen, the voice of Molenubar reaches down through the ages, relating to you the History of the Wizard War.

To leave the introduction, press Start at any time; the Magic Carpet title screen appears. Press Start again and you arrive at the Main menu (see *The Main Menu* below).



THE MAIN MENU

To highlight any of the Main menu options, use the D-Button to move the pointer. To select an option press **X**.

START NEW GAME

You're instantly transported to the world of Magic Carpet, rug at the ready.

CONTINUE PREVIOUS GAME

It is possible to return to the Main menu while in the middle of a game, to allow you to review the game Options. Continue Previous Game is then highlighted – selecting it returns you to the thick of battle.

LOAD GAME

Select Load Game to access previously saved games. The game checks that you have a memory card inserted and that there are saved games available on it. If there are, a menu appears below the 15 save game slots. Select Load and then press **X**. Now use the D-Button to select a save game slot and press **X** to load the game. The game continues from the point at which it was saved.

→ **NOTE:** You can select between two separate memory cards, inserted in Memory card slots 1 and 2, by selecting Card 2 from the menu and pressing **X**.

OPTIONS

Press **X** for the Options menu. Game Options consist of (defaults in **bold**):

Key Assign: Press **X** for the Key Assignment screen. Here, all of the game's key-controlled actions are listed; use the D-Button to highlight the action you wish to redefine and press **START**. Now press the Controller button you wish to assign to the selected action. Repeat the process until all of the buttons are configured to your satisfaction and press **X** to accept the configuration. To return to default keys, press **▲**. To cancel all the changes, press **■**.

→ **NOTE:** Lower Castle keys are always **L1 + R1** pressed simultaneously.

Language: D-Button **↔** to choose whether to run the game in **English**, French, German, Spanish or Swedish.

Sound: D-Button **↔** to choose between Mono and **Stereo** sound.

Danger Music: D-Button \leftrightarrow to toggle danger music **On/Off**. With this option turned **Off**, the game music plays in the background but you aren't alerted to any approaching peril.

Music Volume: Press the D-Button \leftrightarrow to adjust the length of the Volume bar and decrease/increase music volume.

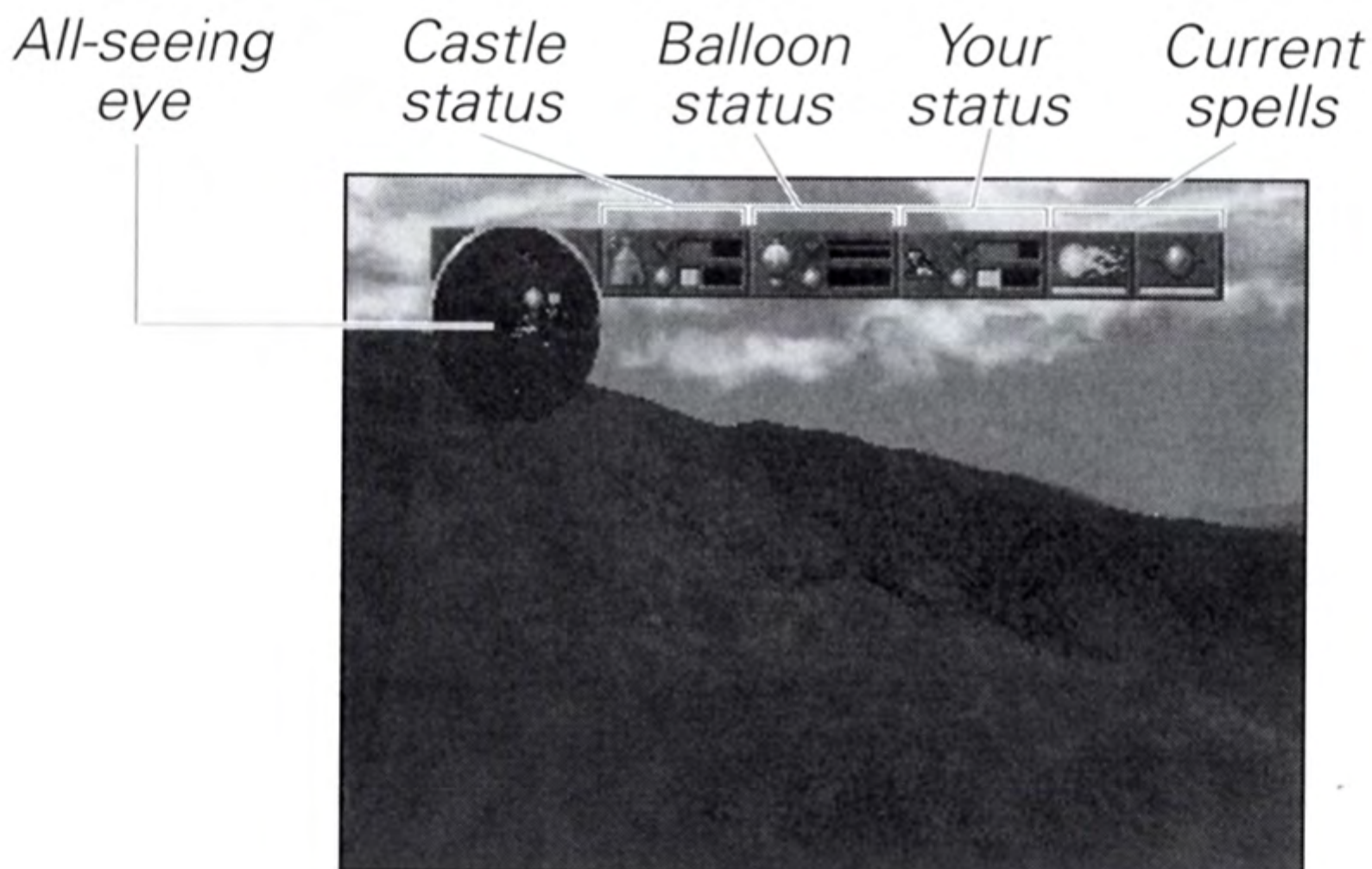
Effects Volume: Press the D-Button \leftrightarrow to adjust the length of the Volume bar and decrease/increase effects volume.

Damping: D-Button \leftrightarrow to turn damping **On/Off**. With damping **On**, momentum is reduced when you take your thumb off the accelerator when flying.

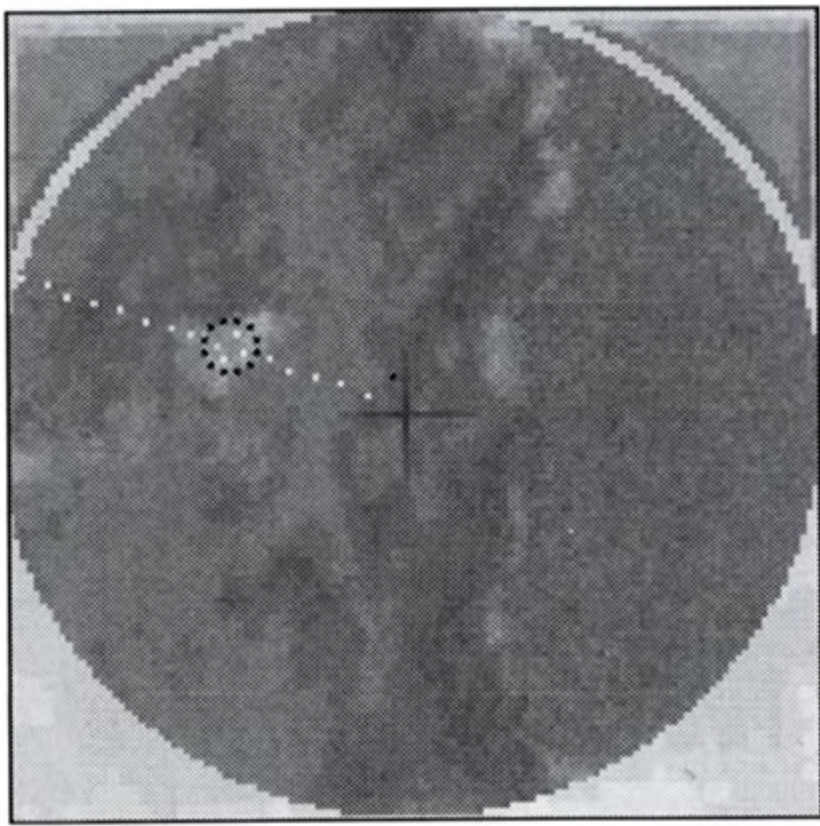
Difficulty: D-Button \leftrightarrow to choose between **Easy** or **Normal** difficulty levels. Easy mode reduces the hit points required to kill each creature and the mobility of the more difficult creatures. The additional Hidden World levels are only available if the game is completed in Normal mode.

Exit: Press \times here to return to the Main menu.

THE GAME SCREEN



When you leave the Main menu, the next world appears before you. Your quest is to restore each world to equilibrium, which can only be done by possessing mana and collecting it in your home castle.



The All-Seeing Eye

This displays everything in the current world. You and your carpet are always at the center of the eye, where your position is marked by a cross. Other objects are color-coded as follows so that you can recognize where danger lurks and where mana can be collected:

Dragon – light green dot

Bee – orange dot

Archer – brown dot

Kraken – dark green dot

Griffin – white dot

Emu rider – dark blue dot

Castle archer – brown dot

Free mana – gold dots

Enemy mana – enemy color

Civilians – blue dots

Teleport – mirror icon

Enemy castle – enemy colored flag

Vulture – red dot

Worm – yellow dot

Crab – pink dot

Troll – light grey dot

Skeleton – dark red dot

Genie – light blue dot

Wyvern – dark gray dot

Your mana – white dots

Spells – red spell jar icon

Your castle – white flag

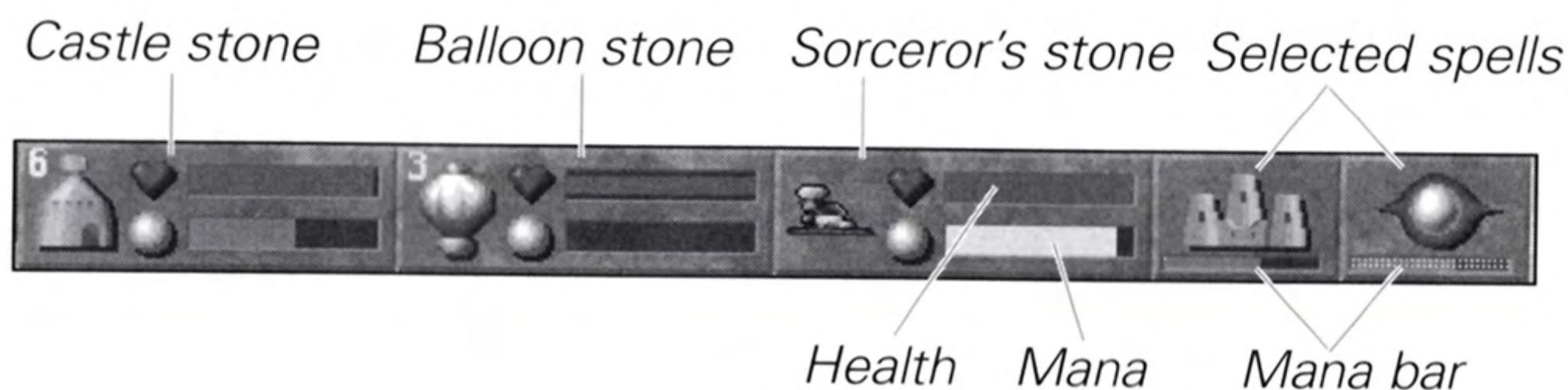
Stones – flashing black dots

The broken line marks the route from your present position back to the castle.

Hot air balloons collect mana (see *Collecting Mana* on p. 11) and are marked on the eye by balloon icons. Your balloons are colored white.

Teleports are windows to other parts of the current world; they are marked on the all-seeing eye as mirror icons. Just fly through a teleport and you're instantly transported to a new location.

The Stones of Knowledge



The Stones of Knowledge at the top of the Game Screen are engraved with mystic runes which display your status. The white marks on the mana bars of the Castle and Sorcerer's stones show the point your power needs to achieve to restore the world's equilibrium. All three stones flash red to let you know when your mana is under threat.

THE SORCERER'S STONE

This shows your status, with the red bar displaying your health and the white bar beneath, your mana.

THE CASTLE STONE

The red health bar lets you know how near your castle is to destruction. On the mana bar the gray area shows the maximum amount of mana the castle can hold, and the white area is the proportion of this space currently occupied.

THE BALLOON STONE

Keep an eye on your balloon's health. If the balloon bursts, all the mana it's carrying is lost; the castle then immediately dispatches another balloon. The thin white line in the mana bar indicates how much precious mana your balloon is currently carrying.

→ **NOTE:** The Castle and Balloon stones (and this is a really obvious point but I'll make it anyway) remain blank until you cast the Castle spell (see *The Spells Menu* on p. 14).

THE SPELL STONES

These two smaller stones show the currently selected spells, and the mana bar indicates whether you have the power to cast the spell and how often (see *The Spells Menu* on p. 14).



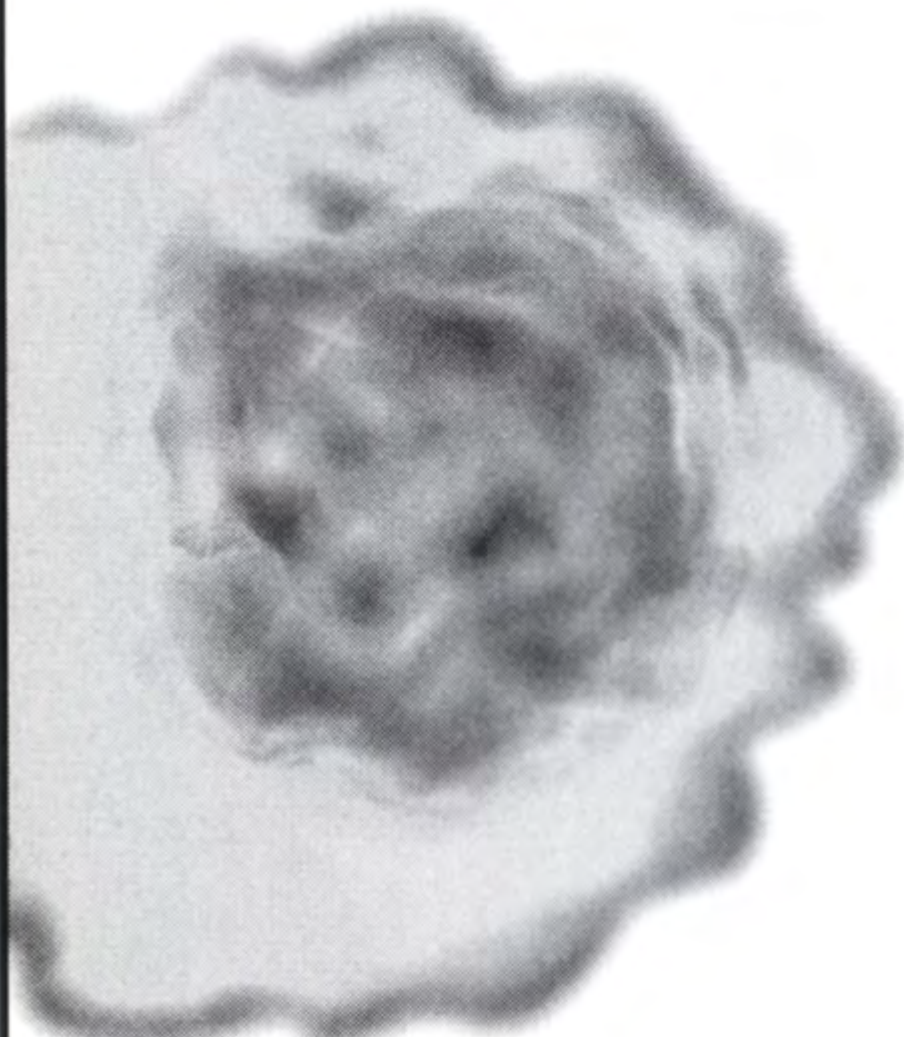
Controlling the Carpet

The skilled maneuvering of the Magic Carpet is absolutely essential to your continued survival. You control the Magic Carpet with a combination of D-Button presses.

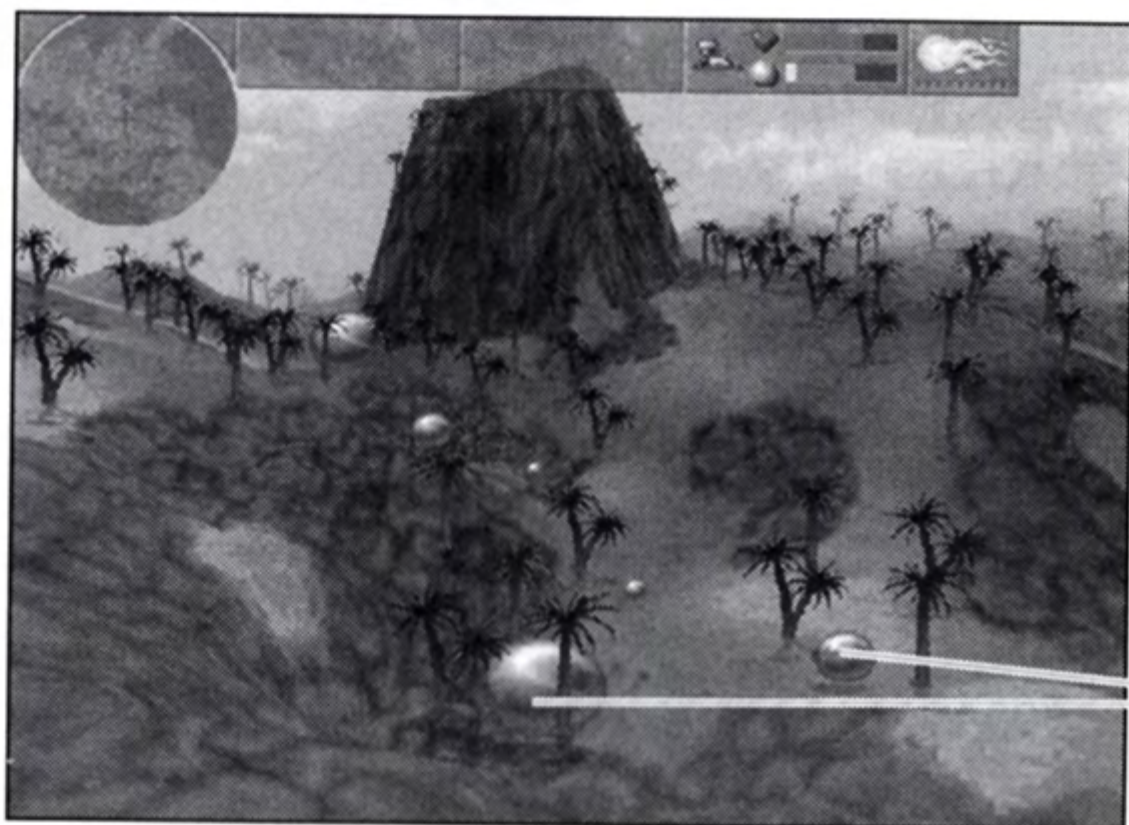
The D-Button controls the altitude of your magic mount and the carpet's direction; press the D-Button **↑** to sink to earth and **↓** to soar skywards. Use the **L2** and **R2** keys to dodge incoming spells by banking the carpet quickly to either side.

Speed is controlled with the **▲** and **✖** buttons. Press **▲** to fly forward; repeat presses increase your speed. Press **✖** to reverse; press **✖** repeatedly to get out of trouble even faster. A double press on the key opposite to the direction of travel brings you to a dead stop.

→ **NOTE:** Luckily, however hard you try and however bad you fly, it's impossible to crash into the ground.



Collecting Mana



Mana balls

A fixed amount of mana exists in each world, hidden along with spells and used by your enemies to possess people, animals and demonic creatures. Destroying aggressors frees the mana, which is then yours to claim. Mana cannot be destroyed, no matter how hard you try.

Mana exists in three states: yours (white), enemy (enemy color) and neutral (gold).

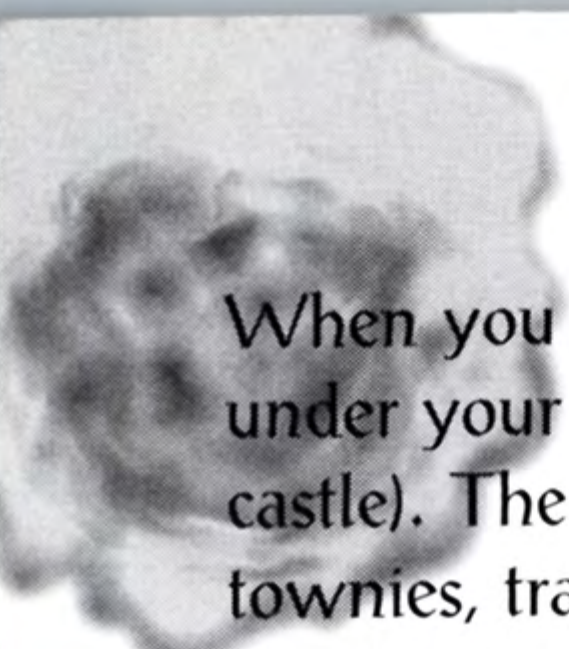
To change the state of mana, you must cast a possession spell (see *Casting a Spell* on p. 18). Mana boosts your power as soon as you've possessed it. However, it only counts toward the total mana needed to complete the level once returned to your castle.

Civilians



Settlement

Civilians



When you possess a house or tent, the occupants' mana comes under your control (although you can't move it back to your castle). The people who live in towns come in three varieties: townies, traders and builders. Townies stay put, builders construct new dwellings for the expanding population, while traders wander from town to town pedaling their wares. Once a town reaches a certain size, it creates its own army of archers to protect it, and if the town is in your possession they will aid your cause.

However, all this potential for good can be ruined if you fire on defenseless townsfolk. The occupants then attack you, costing you mana rather than boosting your power. It might be tempting to fire off a few spells just to test the water, but resist the urge - it'll cost you.

Wasted Wizards

If you're killed without restoring a world to equilibrium, you can replay the world (and hopefully do a little better than the first time). Press **START** to return to the beginning of the level. However, the mana stored in your castle regenerates your personal energy when you're near death, so if you get out of harms way you're able to continue the level.

Enemy wizards have an energy bar above their heads to let you know their strength relative to your own. This is color coded to match the wizard's color. Wizard colors are as follows:

Zanzamar (you): White

Vodor: Red

Gryshnak: Purple

Mahmoud: Blue

Syed: Green

Raschid: Pink

Alhabbal: Orange

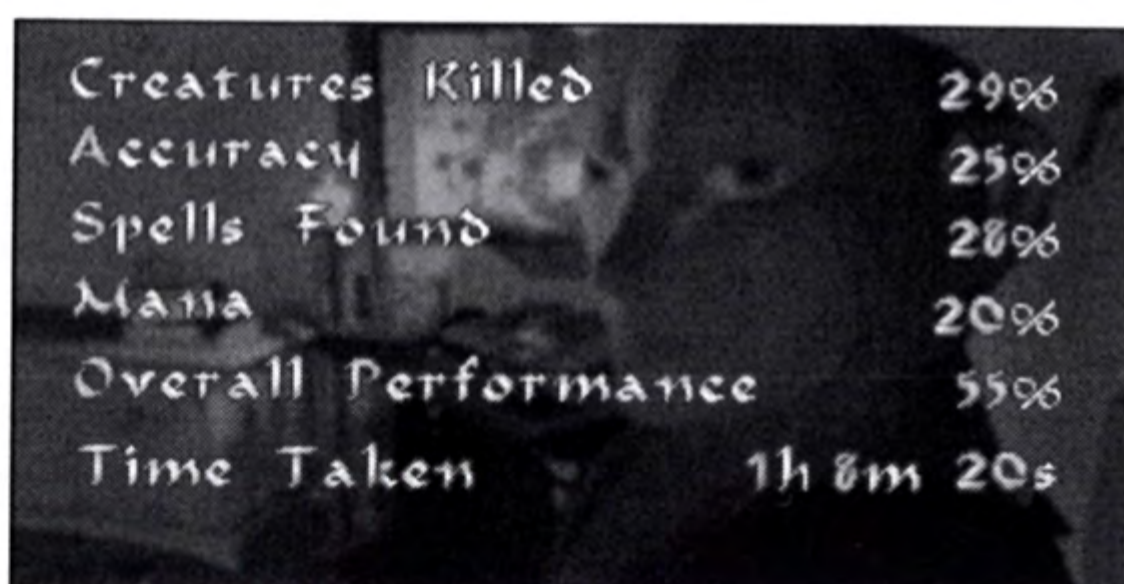
Scheherazade: Black

The wizard's color can also be uncovered by using the Beyond Sight spell (see *The Spells Menu* on p. 14). The name of the rival wizard appears on the All-Seeing Eye in the appropriate color.

If you kill a rival wizard you can cast a possession spell at the wizard's skeletal remains and claim all his mana as your own.

Completing the Level

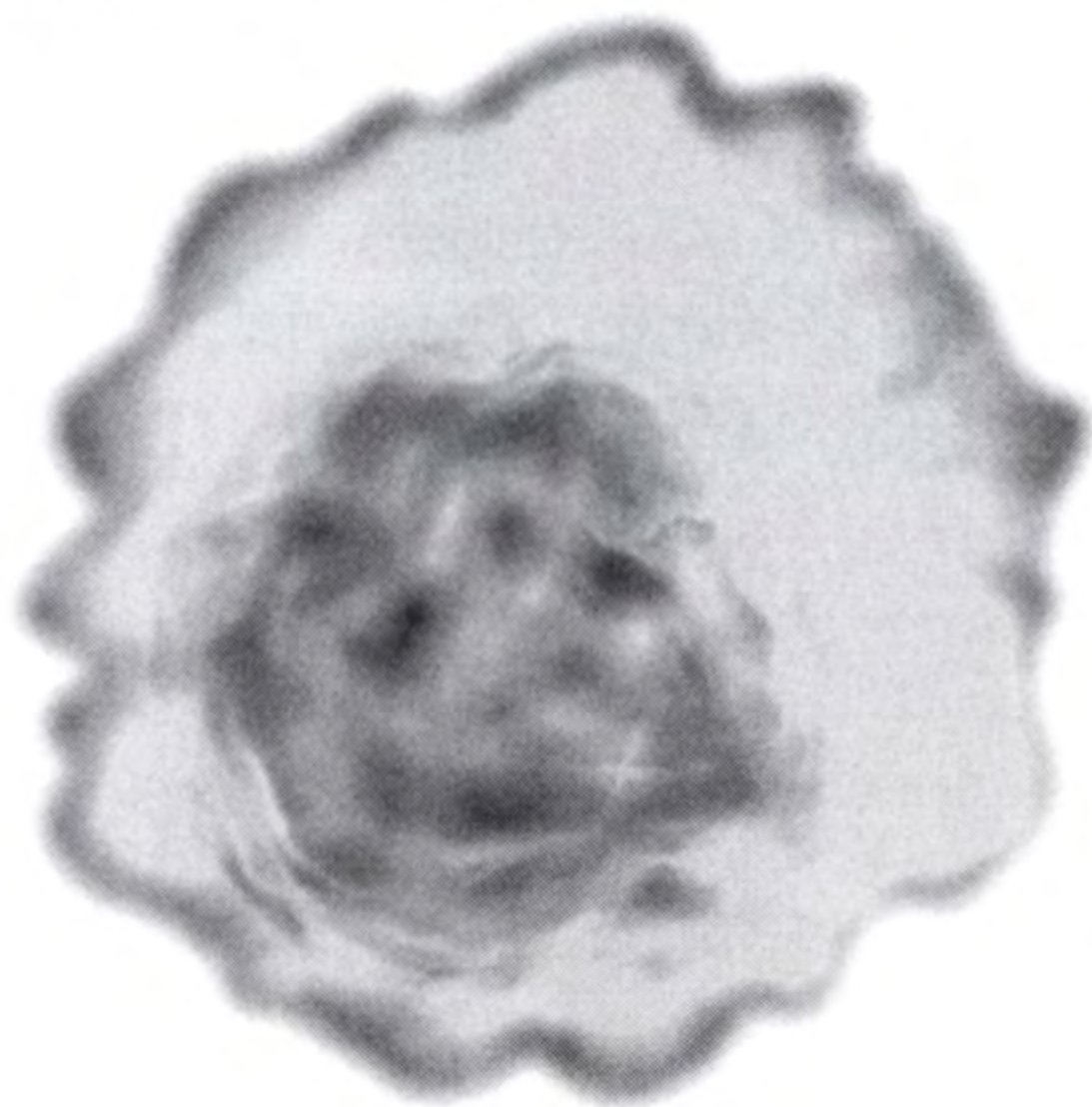
When you've completed your task and restored a world's equilibrium, the on-screen message 'world restored' appears. Press **START** to leave the current world for the Completion screen, or continue collecting mana and spells you may have missed. When you begin the next world, all the spells you've collected so far are still at your disposal.



| | |
|---------------------|-----------|
| Creatures Killed | 29% |
| Accuracy | 25% |
| Spells Found | 28% |
| Mana | 20% |
| Overall Performance | 55% |
| Time Taken | 1h 8m 20s |

The Completion screen tells you the world name and number, and lets you rate your performance with % scores in the following categories: creatures killed, accuracy, spells found, mana and overall performance.

You can now choose to Save (see *Saving Games* on p. 14), Continue or Exit the game. Use the D-Button to highlight one of these options and press **X**. Selecting Exit returns you to the Main menu (see *The Main Menu* on p. 5) while Continue propels you into immediate action in the next world.



SAVING GAMES

Before you do anything, make certain you have a memory card inserted when attempting to save the current game. At the Save Game screen, select Save and press **X** to access the save game slots. Use the D-Button to highlight one of the available slots and press **X** to select it. When saved, select Exit and press **X** to return to the Completion screen.

If the memory card has already been used, some slots may contain the words **In Use**. This means that these slots already contain save data from another game. You cannot save to or load from these slots. If you do not mind losing this data, select Format from the menu and press **X** to format the memory card.

→ **NOTE:** Selecting the Format option erases ALL data, not just that from Magic Carpet, from the memory card.

PAUSING THE GAME

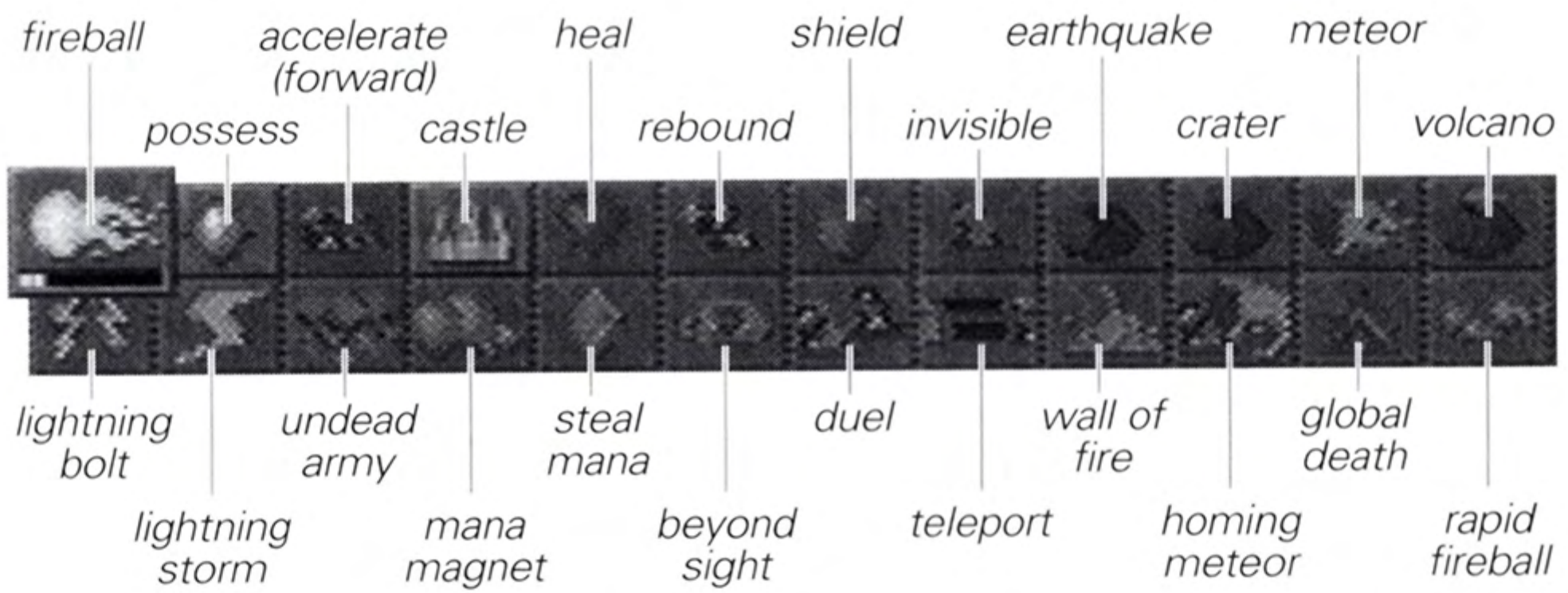
Any time you need to take a breather, press **START** to pause the game. The Pause menu has two options, Continue and Quit, with Continue highlighted; press **START** again to resume battle. Alternatively, D-Button **↓** to Quit and press **START**; you're taken to the Main menu.

THE SPELLS MENU

A place in the Spells menu is reserved for each of the 24 spells to be found in Magic Carpet. A spell automatically homes in on the nearest aggressive target when cast, so the real trick is not aiming the spell but selecting the right one for the occasion.

- To access the Spells menu, press **L1**; action continues on the game screen while you're selecting spells and you can still control your carpet using all the available keys other than the D-Button. The menu disappears automatically after a spell has been chosen.

The 24 spells are:



Fireball Launch a ball of destructive fire at your enemies.

Possess Take control of any building or mana.

Create Castle Use this spell to build a fortress to protect your mana. When cast, a hot air balloon is launched that gathers your mana. Additional castle spells can be cast on the same site, expanding the castle and launching more balloons.

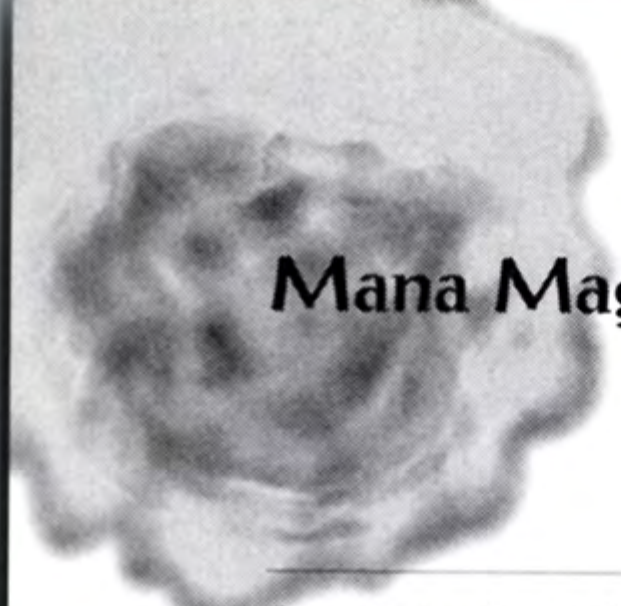
Accelerate Propel yourself out of trouble at breakneck speed in the direction of travel.

Heal If you have enough mana available, this returns your health bar to maximum whenever it's depleted by an enemy attack.

Shield Absorbs three-quarters of the energy of the spells launched by your nemesis.

Rapid Fireball Makes the fireball spell look like a cheap card trick. Unleash multiple balls of flame in rapid succession to devastating effect.

Beyond Sight Gives the All-Seeing Eye greater power than before, revealing the location of all the other wizards.

**Mana Magnet**

Gathers all the mana in the immediate vicinity into one large ball, making it all the easier for your balloon to collect.

Lightning Bolt

This spell's electric, shooting bolts of electricity from your fingertips.

Meteor

Summon almighty rocks and hurl them at any hapless foe who crosses your path.

Invisible

Cloaks you in a mask of invisibility for a time. However, as soon as you cast a spell you can be spotted by other wizards and monsters.

Rebound

Deflects incoming fire spells back to where they came from, so that no harm is done to you and your opponent risks injury.

Steal Mana

Rob evil sorcerers of their hard-earned mana using this spell.

Duel to the Death

Locks two players together for some immortal combat. When you've a foe in your sights cast this spell and they can only escape by using the Accelerate spell.

Wall of Fire

Do I need to spell this one out? Create an impenetrable wall of flame to confound your enemies.

Teleport

This spell instantly transports you to your castle, for the purpose of defense or to recharge with mana power. Cast it again to return to your original location.

Crater

Not as powerful as the Earthquake spell, this adds a large crater to the landscape.

Undead Army

Raise an army of red-cloaked skeletons to attack rival wizards, their castles and balloons.

Earthquake Cast this spell to confound land-based monsters by opening a huge crevice under their feet. But don't waste your time trying to cast this spell in water.

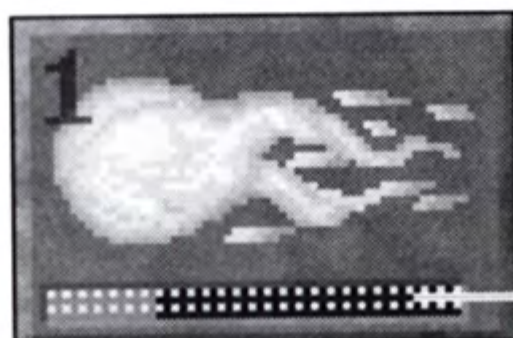
Lightning Storm Unleash a storm of white hot electricity, which shoots off in all directions and destroys everything within its radius.

Volcano Creates a gigantic eruption of red hot lava from the bowels of the earth, destroying everything in the vicinity. An extra advantage of this spell are the periodic eruptions which inflict further damage.

Global Death Sends out a shockwave that proves fatal to anything caught within its influence.

Homing Meteor Like the meteor spell, only more so. This deadly version relentlessly homes in on your enemy.

Spell Mana



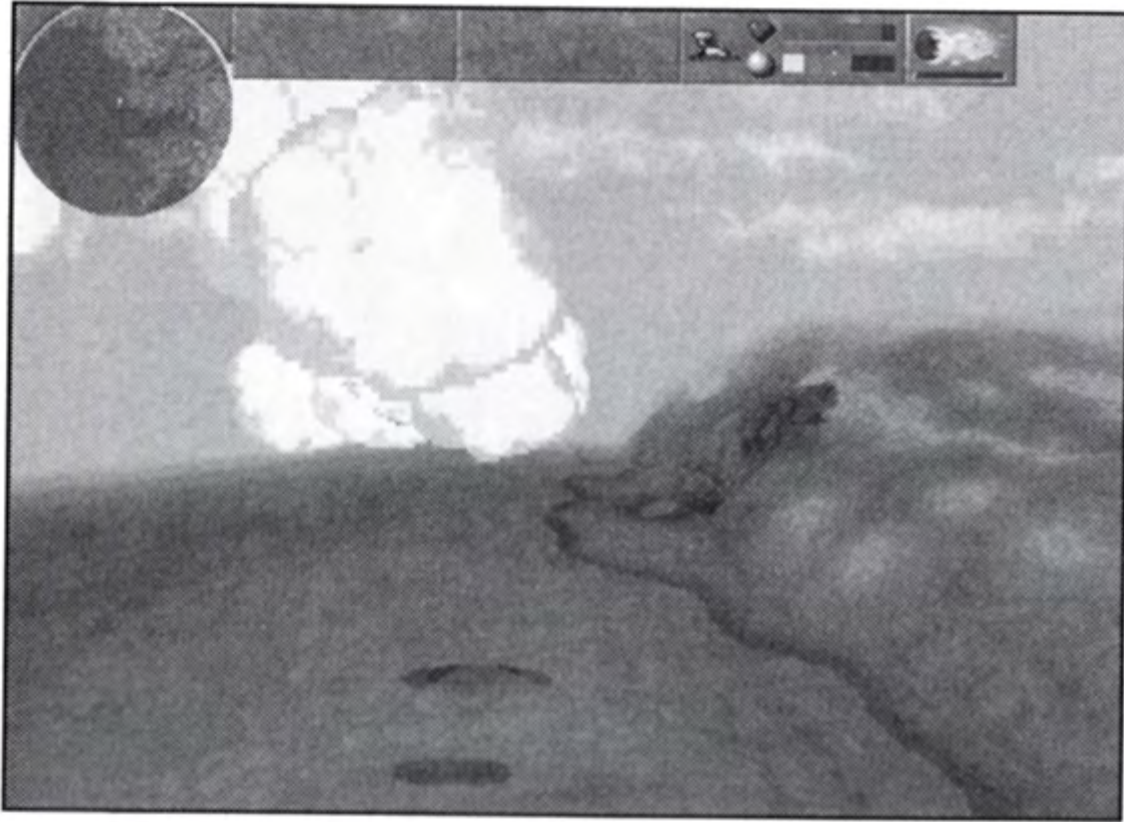
Spell mana bar

When an occupied spell box is highlighted, a mana bar is revealed. A small white dot is added to the bar for every time the spell can be cast; the whole bar must be filled in gray before a dot is added. Some of the higher spells remain inactive in the spells menu until you have built up a large amount of mana in your castle.

Assigning Spells

- To assign a spell, simply highlight the spell and press either the ■ or ● button. On the *C* game screen you can cast these spells by pressing either the ■ or ● button.

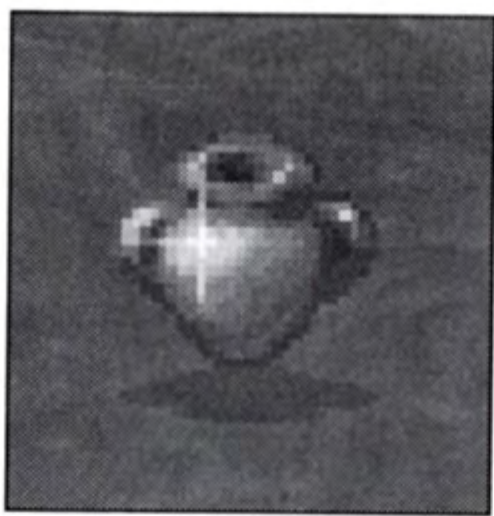
Casting a Spell



Having invested most of your power bringing the Magic Carpet to life, you begin the game with only the Fireball and Possession spells. Fortunately, you can pick up more spells along the way. A spell can usually be found within a stone

circle, but isn't revealed until you've flown past and broken the invisibility lock which keeps it hidden.

- **NOTE:** A horde of mana is often hidden along with a spell, or it can be protected by some fiendish demon—so watch your back.

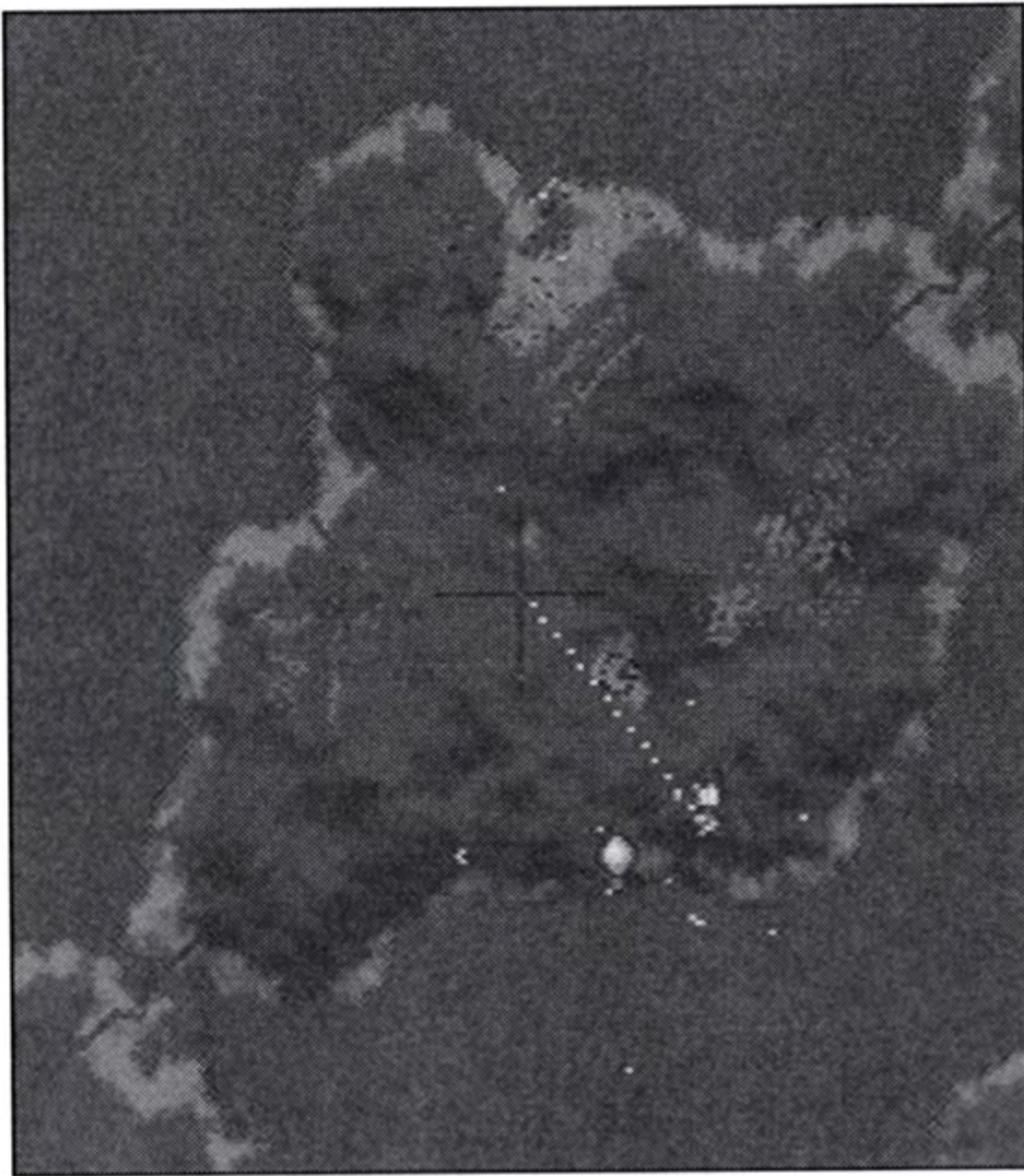


Spells are held within urns and only appear in the magic eye once the invisibility lock has been broken. To collect a spell, simply fly into it; the new spell is added to your inventory. Spells held in blue urns are special. They can only be used on the current level and don't carry over into the next world. Also, you can

cast these spells depending upon the amount of mana in your possession, rather than the amount in your castle.

Spells are cast using the ■ and ● buttons. You can assign any spell from your inventory to either button (see *Assigning Spells* on p. 17).

- **NOTE:** The effect of some spells only lasts for a limited time before the spell must be re-cast.



The Map Screen

This is where you can take a look at the whole of a particular world. To access the Map Screen, press **SELECT**.

Rather than the small area revealed in the All-Seeing Eye, this map shows the entire world currently being played. You are still displayed as a cross in the center of the map and the color-coding system is the same as the All-Seeing Eye.

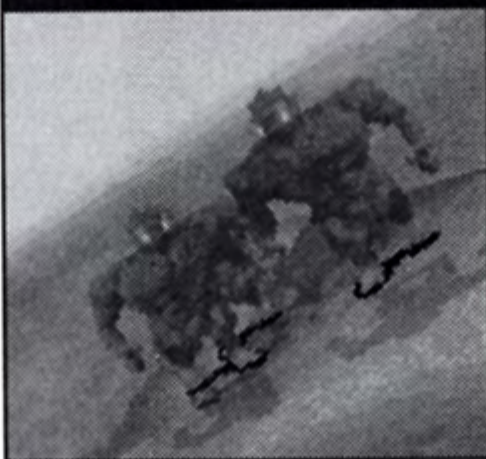
→ **NOTE:** Gameplay pauses while in the Map Screen.

APPENDIX I: THE MAGIC CARPET BESTIARY

Molenubar tells us that every one of Magic Carpet's shattered realms contains monstrous creatures who are driven by an insatiable desire for mana. These unthinking beasts are without remorse and know no reason; your only hope is their destruction.

The Magic Carpet bestiary includes:

APES



Twice the size of Trolls but similar in behavior and likewise armed with boulders, which they sling at you and your castle like confetti.

BEES



Swarm together and attack both you and your castle. Bees are armed with stings, so must get close to inflict damage. They are more

harmful than vultures and harder to kill.

CRABS



When a Crab egg hatches, the small crustacean which emerges is already armed with fireball spells. But Crabs are voracious feeders, and as they consume mana they grow

larger and more powerful. A medium-sized Crab will attack you with lightning bolts, and an adult hurls meteors. When full-grown, Crabs can lay eggs, propagating another generation of this pincer-clawed peril.

DRAGONS



An airborne version of the Worm, similarly armed with fireballs but far quicker and more agile, and therefore that much more difficult to kill.

EMU RIDERS



These flightless birds carry archers at incredible speeds across the landscape, raining volley after volley of arrows down upon you before disappearing into the distance.

GENIE



Less of a threat more a monumental pain in the pants, genies cast fireballs and steal your mana. While unlikely to destroy you, they have the annoying habit of teleporting out of combat situa-

tions only to turn up later with their powers restored.

GRIFFIN



The Griffin is unique in two ways: it can penetrate the cloak of your invisibility spell, and only attacks if you're rash enough to fire first. Armed with lightning bolts, the Griffin becomes a formidable foe when roused.

KRAKEN



When the Kraken wakes, this sea-bound Behemoth emerges from the icy depths firing bolts of lightning. The Kraken is also armed with the Duel spell, and once caught in its vice-like grip you'll be lucky to escape with your rug in one piece.

SKELETONS



Unless stopped, this skeletal scourge launch volley after volley of arrows at you and your castle. They hate the human archers who guard towns and villages, killing them to swell the ranks of this undead army.

TROLLS



Slow and stupid but very strong, Trolls are armed with boulders. They have the enviable ability to regenerate after an injury, so a little bit of overkill might be required to make certain a troll stays dead.

VULTURES



These flockers will attack you and your castle. They use their claws to attack, so need to get very close to do any damage.

WORMS



Earthbound, but armed with fireballs that are capable of downing you and your carpet in double-quick time.

WYVERN



This flying nightmare makes a Dragon resemble a spring lamb. The Wyvern is armed with rapid fireballs and is immune to the Rebound spell. It attacks castles, eats mana and even when beaten half to death can regenerate its power in a very short time.

APPENDIX II: A WORD ON EACH WORLD

In his History of the Wizard War, Molenubar hints at the nature of the challenge contained in each world. Forewarned is forearmed, so here for your benefit are a few facts that might help keep you and your carpet in one piece. However, some of the realms remained hidden even to the all-powerful wizard. These Hidden Worlds contain many obstacles the nature of which remain entirely unknown; be especially wary when you enter these, for here be dragons and many even mightier terrors. The additional Hidden World levels are only available if the game is completed in Normal mode.

AL JAHAN

The peaceful island dwellers of Al Jahan are in dire need of your aid.

KHALLABAD

Traders from Khallabad speak of coiling horrors bringing down death from the skies.


SULGHIR

Ancient warriors from the realm of Sulghir have risen from their graves.

AKRIR

The evil sorcerer Vodor has unleashed chaos in the land of Akrir.

| | |
|--------------------|--------------------------------------------------------------------------------------------------|
| CESSECCA | Settlers on the island of Cessecca are plagued by swarms of giant bees. |
| QAZZIEL | The Seer of Qazziel has foreseen the destruction of his city by undead hordes and other terrors. |
| AR ULNAN | The port of Ar Ulnan is under siege by air and sea. |
| GILLAH | Evil trollish tribes have returned to Cjillah for the first time in a thousand years. |
| RANNAXIOR | Griffins have invaded the sacred mana grounds of Rannaxior. |
| ZANZANDRIA | Would-be sorcerers have been lured to Zanzandria by rumors of great magic there. |
| MEHKHEL | Magical mirrors provide a route through Mehkhel – land of exile. Seek and you shall find. |
| DULLIGHIR | The maze of Dullighir guards its secrets well. |
| NAZZAJAHN | Follow the endless path of the stones of Nazzajahn to unleash great power. |
| AL SAUMAM | Beware, the shores of Al Saumam harbor scuttling nightmarish creatures. |
| AFLAHKSTAHN | The key lies in unlocking the four ways of the fortress. |
| JAN TABAR | A great wyvern has been sighted near the mountains of Jan Tabar. |
| AR VILIM | Devilish traps spring from every corner of this realm. |
| JONDD WARR | The island of Jondd Warr is infested with dragons...and other things. |



KHAGHABAL

Mana guarded in the watchtowers of Khaghabad has attracted many scuttlers to the realm.

UL RAMIN

Banish evil from Ul Ramin and beware your adversaries for their skills are increasing.

NAQUAL

The souls of the fallen heroes of Naqual have been possessed by necromancy.

QUADDIMAR

Of those who have ventured beyond the borders of Quaddimar, few have returned.

OTTOMMIA

Zimbaliza, greatest of the original warlocks fell here centuries ago and his magic still remains, so they say.

XIKHYPT

Restore order to this land and you will be well prepared for the realms beyond.

**BE WARNED.
BEYOND THIS POINT YOUR JOURNEY WILL TAKE
YOU TO REALMS GUARDED BY MANA VAMPIRES
WHO WILL STEAL MANY OF YOUR SPELLS.**

SHEBBAHN

Seek the sacred forest of Shebbahn to recover spells stolen from you – but beware the consequences.

HAZZANJAHN

The isles of Hazzanjahn are linked by magical mirrors but not all of them take you where you want.

BANAHESTUR

Your adversaries have never conquered this realm. Can you?


IDIRYA

Do not anger the griffin of the Idiryan Sea until you have the spell to defeat them.

THAMMON

The impassable walls of Thammon guard great power and great danger.

| | |
|--------------------|------------------------------------------------------------------------------------------------------------|
| KHATOUD | Plagues of giant bees have rendered this once beautiful land barren. |
| SHAI YULIM | The city of Shai Yulim is under attack but to save it you must first defeat the genie at the gate. |
| MOORROK | Your enemies await you in the hills of Moorrok. |
| QUAHAHN | All who practice the magic arts must be tested in the ancient training grounds of Quahahn. |
| YOGGOHR | The pools of Yoggohr are an enigma only the worthy will unravel. |
| AR ZALJAN | Merchants returning from Ar Zaljan say that all is lost but one must never abandon hope. |
| OORAMESA | Many turn back at the sight of the walls of Ooramesa but you must persevere. |
| GHABBALADAN | Great evil lurks in and around Lake Ghabbaladan. |
| TEKUMIR | To restore order to this realm, one must first find an order to restore. |
| ZANTOR | Zantor has already been utterly destroyed but the creatures which remain must be banished forever. |
| DUBBAHN | Dubbahn, isle of exile is under attack and the capricious imps guarding it will steal most of your powers. |
| EPHIERIA | Ephieria must not fall to the forces of evil – you are their only hope. |
| INIXXIA | Inixxia was once a fertile land. Now death is the only harvest. |



MEEBIR

See Meebir and die.

SHAL KAZAN

Be warned, several sorcerers already claim this territory as theirs.

VOLCANIA

Steer a careful course, for in this place the land itself spews death into the skies.

ABOUT BULLFROG

Welcome to Bullfrog Productions

If you haven't heard of Bullfrog Productions, where have you been for the last seven years? Believe it or not, as recently as 1989 the world hadn't been exposed to *Populous*, the revolutionary software program that made Bullfrog's name and single-handedly created the god sim genre overnight. Twenty different formats and world-wide sales in excess of three million later, *Populous* has become the stuff of industry legend. Yet it was only the first in a series of software smashes that has earned Bullfrog number one hit after number one hit:

PowerMonger, *Populous 2*, *Syndicate* and *Theme Park* followed, and all enjoyed immense commercial success and critical acclaim. The company's success is a monument to the efforts of Peter Molyneux and Les Edgar, who together founded Bullfrog Productions back in 1989. From a two-man operation the company has expanded and now has over 40 employees, with a policy of constantly strengthening the creativity and technical expertise of the Bullfrog team. It is this policy that has helped the company produce such consistently outstanding software.

As if more proof were needed, last year witnessed the first flight of *Magic Carpet*. A number one seller all over the planet, *Magic Carpet* was also voted *Game of the Year* in France and Germany, *Title of the Year* in Britain and helped Bullfrog earn the *Developer of the Year* and *Innovation Awards* at ECTS 1995. As part of Bullfrog's commitment to the new range of 32-bit machines, we're bringing **PlayStation** game console owners the same blend of relentless action and breathtaking graphics.

CREDITS

ORIGINAL PC VERSION DESIGNED BY BULLFROG PRODUCTIONS, LTD.

Producer: Sean Cooper

Lead Programmers: Sean Cooper, Mark Huntley

Engine Programmer: Glenn Corpes

Programmers: Simon Carter, Phil Jones

Lead Artist: Fin McCgechie

Graphics and Art Concepts: Paul McLaughlin, Mike Man,
Mark Healey, Eoin Rogan, Barry Meade, Tony Dawson

Introductory Sequence: Chris Hill

Introductory Support: Mike Man, Paul McLaughlin, Eoin Rogan,
Sean Masterson

Level Concepts and Architecture: Sean Masterson

Level Design: Barry Meade, Alex Trowers, Jonty Barnes,
Daniel Russell

Sound and Music: Russell Shaw

Game Testers: Andy Cakebread, Mike Diskett, Kevin Donkin,
Mark Lamport, Tristan Paramor, Nathan Smethurst, Mark Webley

Executive Producer: Peter Molyneux

PLAYSTATION GAME CONSOLE CONVERSION BY KRISALIS SOFTWARE LTD.

Programmer: Jay Butler

Additional Art: Darren Hebden, Phil Hackney

Additional Sound: John Avery

FOR BULLFROG:

Producer: Andy Nuttall

Additional Programming Assistance: Sean Cooper, Glenn Corpes,
Steve Metcalf

Lead Tester: Andy Robson

Game Testers: Jeff Brutus, Wayne Imlach, Tristan Paramor

PR & Marketing: Cathy Campos, Sean Ratcliffe, Pete Murphy

Technical Assistance: Kevin Donkin, Mike Burnham

Management: Les Edgar

Administration: Audrey Adams, Jo Goodwin, Sian Jones, Emma Gibbs

Thanks to (in alphabetical order): Mark Adami, Dennis Alderton,
Martin Bell, Stuart Black, Gary Carr, Martin Carroll, Dene Carter,
Ken Chan, Barry Clarke, Tony Cox, Jason Cunningham,
Ben Deane, Jonathan Farmer, Vincent Farquharson,
Stephen Minifie, Adrian Moore, Sarah Nuttall, Alex Peters,
Richard Reed, Jonathan Rider, Ian Shaw, Guy Simmons,

Mark Stacey, Gary Stead, Matt Sullivan, Jan Svarovsky, Darren Thomas, Steve Wilding, Alan Wright

Special Thanks to: Steve Fitton, David Byrne, Paulette Doudell of EASM, Tom Boyd of SCEA, Matt Bettinson and the CU-Amiga Conference

Executive Producer: Sean Cooper

FOR ELECTRONIC ARTS:

Product Manager: Peter Murphy

Documentation: Neil Cook

Documentation Design: Caroline Arthur

Package Design: Colin Dodson

FOR ELECTRONIC ARTS (U.S.):

Product Manager: Jonathan Harris

Package Art Direction: Nancy Waisanen

Documentation Design: R. Lambing Design

Package Design: R. Lambing Design

Quality Assurance: Kirk C. Scott, Don Rottiers

ELECTRONIC ARTS LIMITED WARRANTY

Electronic Arts warrants to the original purchaser of this Electronic Arts software product that the medium on which this computer program is recorded is free from defects in materials and workmanship for a period of ninety (90) days from the date of purchase. This Electronic Arts software program is sold "as is," without express or implied warranty of any kind, and Electronic Arts is not liable for any losses or damages of any kind resulting from use of this program. Electronic Arts agrees for a period of ninety (90) days to either repair or replace, at its option, free of charge, any Electronic Arts software product, postage paid, with proof of purchase, at the Electronic Arts Warranty Department. This warranty is not applicable to normal wear and tear. This warranty shall not be applicable and shall be void if the defect in the Electronic Arts software product has arisen through abuse, unreasonable use, mistreatment or neglect.

LIMITATIONS—This warranty is in lieu of all other warranties and no other representations or claims of any nature shall be binding on or obligate Electronic Arts. Any implied warranties applicable to this software product, including warranties of merchantability and fitness for a particular purpose, are limited to the ninety (90) day period described above. In no event will Electronic Arts be liable for any special, incidental, or consequential damages resulting from possession, use or malfunction of this Electronic Arts software product.

Some states do not allow limitations as to how long an implied warranty lasts and/or exclusions or limitations of incidental or consequential damages so the above limitations and/or exclusions of liability may not apply to you. This warranty gives you specific rights, and you may also have other rights which vary from state to state.

NOTICE

Electronic Arts reserves the right to make improvements in the product described in this manual at any time and without notice.

This manual and the software described in this manual are copyrighted. All rights are reserved. No part of this manual or the described software may be copied, reproduced, translated, or reduced to any electronic medium or machine-readable form without the prior written consent of Electronic Arts, P. O. Box 7578, San Mateo, California 94403-7578, Attn: Customer Support.

RETURNS AFTER WARRANTY—To replace defective media after the ninety (90) day warranty period has expired, send the original CD to Electronic Arts' address below. Enclose a statement of the defect, your name, your return address, and a check or money order for \$15.00.

Electronic Arts, Customer Warranty, P.O. Box 7578, San Mateo, California 94403-7578
If you need technical assistance with this product, call us at (415) 572-2787 Monday through Friday between 8:30 AM and 4:30 PM, Pacific Time.

EA Tech Support Fax: (415) 286-5080

HOW TO REACH US ONLINE

CompuServe: Game Publishers Forum A (GO GAMAPUB)

Or send e-mail to 76004,237

America OnLine: Send e-mail to ELECARTS

Internet E-mail: support1@ea.com

Or send e-mail to elecarts@aol.com or 76004.237@compuserve.com

World Wide Web: Access our Web Site at <http://www.ea.com>

FTP: Access our FTP Site at <ftp.ea.com>

If you live outside of the United States, you can contact one of our other offices.

In **Australia**, contact:

Electronic Arts Pty. Ltd.
P.O. Box 432
Southport Qld 4215, Australia

In the **United Kingdom**, contact:

Electronic Arts Ltd.
P.O. Box 835
Slough SL3 8XU, UK
Phone (753) 546465.

In **Australia:** For Technical Support and Game Hints and Tips, phone the EA HOTLINE: 1 902 261 600 (95 cents per min.) ITM 7 days a week 10 AM – 8 PM. If you are under 18 years of age parental consent required.

Software © 1994-96 Bullfrog Productions, Ltd.

Magic Carpet and Bullfrog are trademarks and the Bullfrog logo is a registered trademark of Bullfrog Productions, Ltd. Bullfrog Productions, Ltd. is a division of Electronic Arts.

Documentation © 1996 Electronic Arts. All rights reserved.

Hi-Octane™

THE TRACK FIGHTS BACK!

This high intensity combat driving game puts you behind the wheel of heavily armed hovercars, competing against other drivers in a death



CHOOSE FROM SIX HOVERCARS – EACH WITH DIFFERENT HANDLING, SPEED, AND FIREPOWER



EXCITING MULTIPLAYER OPTIONS – 2 PLAYER SPLIT SCREEN OR UP TO 8 PLAYERS USING 'HOT SEAT' FEATURE

defying competition of high speeds and hot lead. But you'll need to watch more than just your back, because the track can be just as deadly as the hovercar in your rear view mirror.



TEST YOUR SKILLS IN THE CHALLENGING DEATH MATCH MODE



9 DIFFERENT TRACKS – EACH WITH A MIND OF ITS OWN AND JUST AS DEADLY AS YOUR RIVALS



REAL-TIME TERRAIN MORPHING – THE TRACKS SHIFT RIGHT BEFORE YOUR EYES



BLOW AWAY THE COMPETITION WITH MINI-GUNS AND MISSILE LAUNCHERS



© 1996 Bullfrog Productions, Ltd. The Bullfrog logo, Hi-Octane and Magic Carpet are trademarks of Bullfrog Productions, Ltd. All rights reserved. Bullfrog Productions, Ltd. is an Electronic Arts company. Electronic Arts, 1450 Fashion Island Blvd., San Mateo, CA 94404.

Licensed by Sony Computer Entertainment America for use with the PlayStation game console. PlayStation and the PlayStation logos are trademarks of Sony Computer Entertainment Inc. The ratings icon is a registered trademark of the Interactive Digital Software Association. Manufactured and printed in U.S.A. THIS SOFTWARE IS COMPATIBLE WITH PLAYSTATION GAME CONSOLES WITH THE NTSC U/C DESIGNATION

762805

U.S. AND FOREIGN PATENTS PENDING.